



SPECIALS

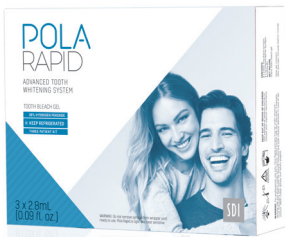
JULY | AUGUST 2024

NEW ZEALAND

COMPOSITES | TOOTH WHITENING
CEMENTS | ADHESIVES | ETCHANTS
SEALANTS | AMALGAMS
ACCESSORIES | EQUIPMENT

TOOTH WHITENING

POLA RAPID SUPER. FAST. WHITENING.



POLA RAPID

Pola Rapid is the new in office whitening treatment that safely whitens teeth in a 24 minute application time.

SUPERIOR HANDLING AND FAST REMOVAL

Pola Rapid's higher viscosity gel enables faster application and removal due to its specially formulated non-stick attributes. Pola Rapid can be extruded quickly and easily and remains on teeth when applied.

ENHANCED BLUE GEL FOR FASTER APPLICATION

Pola Rapid uses an advanced blue gel for ease of visibility and application. The easy to apply non-stick gel enables faster application and removal.

MINIMAL CHAIR TIME WITH IMMEDIATE RESULTS

A unique **38% hydrogen peroxide** formulation that releases active ingredients immediately. In only one visit, Pola Rapid initiates a powerful whitening treatment designed to whiten teeth in 24 minutes. No pre-desensitiser step is required.

POLA RAPID 1 PATIENT KIT WITH OPTRAGATE
POLA RAPID 3 PATIENT KIT WITH OPTRAGATE
POLA RAPID 1 PATIENT KIT
POLA RAPID 3 PATIENT KIT



Image source: Dr Miles Cone, USA.

PURCHASE A POLA
RAPID 3 PATIENT KIT
**GET A LUNA 2 XB
BLEACH SYRINGE
AND A BONUS
POLA LIGHT***



**TOTAL
VALUE**
\$225.90*

TOOTH WHITENING



POLA DAY

HYDROGEN PEROXIDE BASED ADVANCED TRAY TOOTH WHITENING SYSTEM

- Available in **7.5%** and **9.5% hydrogen peroxide**
- High water content
- From 30 minutes once a day



POLA NIGHT

CARBAMIDE PEROXIDE BASED ADVANCED TRAY TOOTH WHITENING SYSTEM

- Available in **10%**, **16%** and **22% carbamide peroxide**
- High water content
- From 45 minutes once a day



POLA FOR ALIGNERS

STRAIGHTEN AND BRIGHTEN TOGETHER

- Available in **10% carbamide peroxide**
- The greatest patient comfort in a whitening kit
- High viscosity gel ensures it can be easily and securely placed into the aligner tray, staying in place

POLA FOR ALIGNERS 4 X 3G



POLA DAY CP

SUPER FAST TRAY TOOTH WHITENING SYSTEM

- Available in **35% carbamide peroxide**
- From just 15 minutes per day tray wear time
- Fluoride Releasing

POLA 4 X 1.3G MINI KIT
POLA 10 X 1.3G SYRINGE KIT
POLA 50 X 3G DISPENSER PACK



SOOTHE

DESENSITISING GEL

- Available in **6% potassium nitrate** and **0.1% fluoride**
- Instant relief of sensitivity - use before or after whitening treatment

SOOTHE MINI KIT
SOOTHE BULK KIT



POLA LUMINATE

BRUSH ON & GO!

- No trays required - quick and easy professional brush on tooth whitener
- **6% hydrogen peroxide** low viscosity fast drying gel

POLA LUMINATE

POLA

ADVANCED TOOTH WHITENING SYSTEM

TAKE HOME WHITENING

6+1*
BUY 6, GET 1 FREE

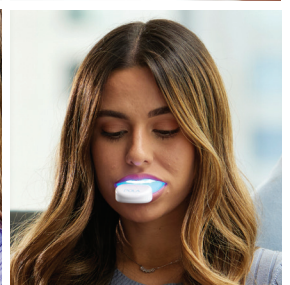
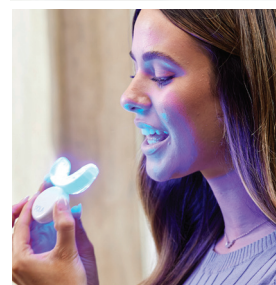
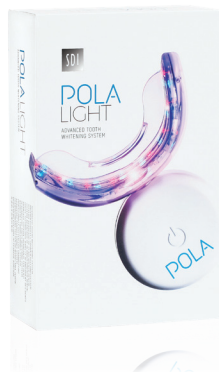
10+3*
BUY 10, GET 3 FREE

ENJOY A BRIGHTER, MORE CONFIDENT SMILE IN 5 DAYS

- No custom trays required
- Reduced patient consult time
- Entry level whitening option
- Great front desk conversation starter

INCLUSIONS

- 1 x Pola LED mouthpiece
- 4 x 3g Pola Day 6% tooth whitening syringes
- 1 USB charging cord
- 1 x Instruction guide





STELA

BPA & HEMA FREE

THE FUTURE OF COMPOSITES

- ✓ Unlimited depth cure with self-curing
- ✓ Gap-free interface for longevity without sensitivity
- ✓ Two steps: with no etching or light curing
- ✓ Extremely high flexural and compressive strength
- ✓ Available in capsule or automix syringe

BUY 2 GET 1 FREE*



- STELA AUTOMIX 1x 8g SYR REFILL
- STELA AUTOMIX INTRO KIT 1x 8g SYR, STELA PRIMER 5mL
- STELA CAPSULE REFILL 50 CAPS
- STELA CAPSULES INTRO KIT 10 CAPS, STELA PRIMER 5mL
- STELA PRIMER REFILL 5mL BT

PREPARATION IN JUST 15 SECONDS

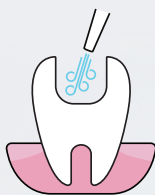
STELA PRIMER



Prime cavity and margins



Wait 5 sec



Dry for 2-3 seconds

Steps	Time
2	15 sec

Stela: straight to placement in 15 seconds



PLACE STELA COMPOSITE

SDI | LUNA FLOW

UNIVERSAL FLOWABLE COMPOSITE



LUNA FLOW AND LUNA FLOW LV

UNIVERSAL FLOWABLE COMPOSITE

Perfect Flow. Perfect Stay.

- Flows on demand, holds its shape for superior handling, and does not string
- Very high 265% AI radiopacity, making it an excellent radiopaque base or liner
- Vita-shaded with Logical Shade Matching Technology and chameleon effect for easier and consistent shade selection, with great colour stability, perfect not only for small restorations but also for repairing provisionals or porcelain
- Exceptional compressive strength of 421MPa for very strong restorations
- Great flexural strength of 128MPa for Class V restorations
- Opalescent and fluorescent like the tooth for natural results
- Options of regular (Luna Flow) and low viscosity (Luna Flow LV) for every clinical situation

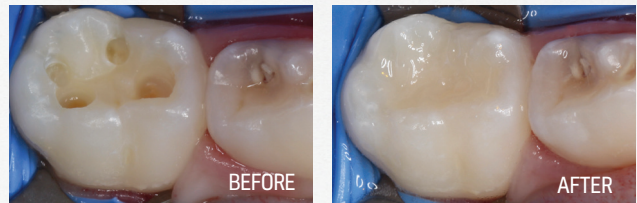
EXAMPLE OF FLOW



LUNA FLOW
Regular
viscosity~

LUNA FLOW LV
Low viscosity~

~At 40 seconds



Images courtesy of - Dr Carla Cohn, Canada



Scan
QR code
for more
information

LUNA FLOW/LV 2G SYRINGE
LUNA FLOW/LV BULK KIT 5 X 2G SYRINGES
LUNA FLOW/LV INTRO KIT 4 X 2G SYRINGES



VISCOSITY OPTIONS

Regular (Luna Flow) and
low viscosity (Luna Flow LV)



GREAT HANDLING

Thixotropic for total control
over application.



HIGH COMPRESSIVE STRENGTH

420MPa



HIGH POLISH FOR EXCELLENT RESULTS



HIGH RADIOOPACITY 265% AI



HIGH FLEXURAL STRENGTH

128MPa

BUY 5 - GET 1 FREE*



BUY A RADII XPERT GET 5 REFILLS OF ANY SDI COMPOSITE FREE*

[EXCLUDES STELA]

SMARTER DESIGN.
OPTIMAL CURE EVERY TIME.



RADII XPERT



"Your curing light is vitally important to your dentistry and your practice. You need several things in a curing light. The Radii Xpert by SDI has all of those things. It gives you functionality and flexibility for everyday use."

Dr Joshua Austin, DDS, MAGD.
Dental Economics -
United States - November 2020

BULK FILL COMPOSITES



AURA BULK FILL

- 5mm depth of cure
- Non-stick, waxy consistency
- Low volumetric shrinkage



AURA BULK FILL 4g SYRINGE REFILLS
AURA BULK FILL 20 X 0.25g COMPLETS

UNIVERSAL COMPOSITES



LUNA 2

- Non-stick handling that maintains its sculpted shape
- Chameleon effect for accurate shade matching
- BPA free



LUNA 2 4g SYRINGE
LUNA 2 20 X 0.25g COMPLETS



AURA EASY

- 4 shades cover 16 Vita® shades
- Non-stick and easy to sculpt
- Wear resistant with high strength

AURA EASY 4G SYRINGE
AURA EASY 20 X 0.25G COMPLETS



AURA

- Dentine and enamel shades
- High polishability and gloss
- High-strength and wear resistance

AURA DENTINE 4g SYRINGE
AURA DENTINE 20 X 0.25g COMPLETS
AURA ENAMEL 3g SYRINGE
AURA ENAMEL 20 X 0.20g COMPLETS

FLOWABLE COMPOSITES



LUNA FLOW

- Effortlessly flows to margins with thixotropic properties
- Excellent strength, radiopacity and wear resistance
- Accurate shade matching

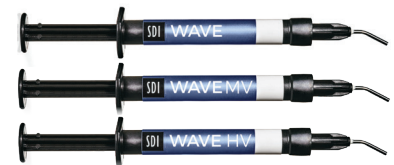
LUNA FLOW/LV 2g SYRINGE



AURA EASYFLOW

- 4 shades cover 16 Vita® shades
- Thixotropic for maximum control during application
- High flexural strength and radiopacity

AURA EASYFLOW 2g SYRINGE



WAVE

- Natural fluorescence
- Three viscosities
- High compressive strength

WAVE 1g SYRINGE

ALLOYS



PERMITE

HIGH SILVER NON-GAMMA 2 ADMIX ALLOY

- Superior handling characteristics
- Void-free restorations with no marginal leakage
- Extremely high resistance to corrosion
- Mechanical and chemical stability
- High strength and hardness for extreme wear resistance



GS-80

ECONOMICAL NON-GAMMA 2 ADMIX ALLOY

- High early compressive strength
- Great corrosion resistance
- Excellent marginal sealing
- Optimal handling characteristics
- Dimensional stability



LOJIC+

WORLDS FIRST PLATINUM MODIFIED SPHERICAL AMALGAM

- Creamy consistency, soft packing and smooth carving
- Very high compressive strength
- Superior marginal adaptation
- Easy to polish to a mirror finish
- Endurable, corrosion resistant amalgam

5% OFF ALL ALLOY*

ACCESSORIES

POINTS

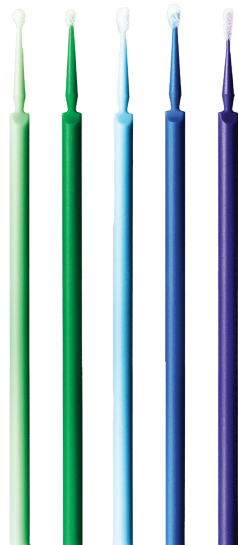
DISPOSABLE BRUSH APPLICATORS

- Points disposable brush applicators are used to quickly transfer small amounts of material into areas that are difficult to reach. Points are resistant to common solvents in dental materials.

BOX OF 400
POINTS DISPENSER



Points can be used either straight or bent



BUY 5, GET 1 FREE*

SEALANT



CONSEAL F

LIGHT CURED FLUORIDE RELEASING RESIN PIT AND FISSURE SEALANT

- High fluoride releasing
- BPA & HEMA free
- Accurate and controlled delivery with an ultrafine tip

CONSEAL F INTRO KIT
CONSEAL F BULK SYRINGE KIT
CONSEAL F BOTTLE KIT

BUY 3, GET 1 FREE*

HENRY SCHEIN®
DENTAL

Rely on Us™

free phone 0800 808 855
orders@henryschein.co.nz
www.henryschein.co.nz

*All prices exclude GST. Offers cannot be combined. Valid on invoices dated July 1st - August 31st 2024. All claims for free goods must be made within 30 days from the end of promotion date. The above-mentioned offers are not applicable on corporate, government accounts or those customers who have received discounted pricing. Bonus goods must be of equal or lesser value. Offers are valid in New Zealand only.

Courtney Gerlach
Sales Product Specialist -
New Zealand
SDI Limited
m: +64 21 400 323
e: Courtney.Gerlach@sdi.com.au

SDI

YOUR
SMILE.
OUR
VISION.